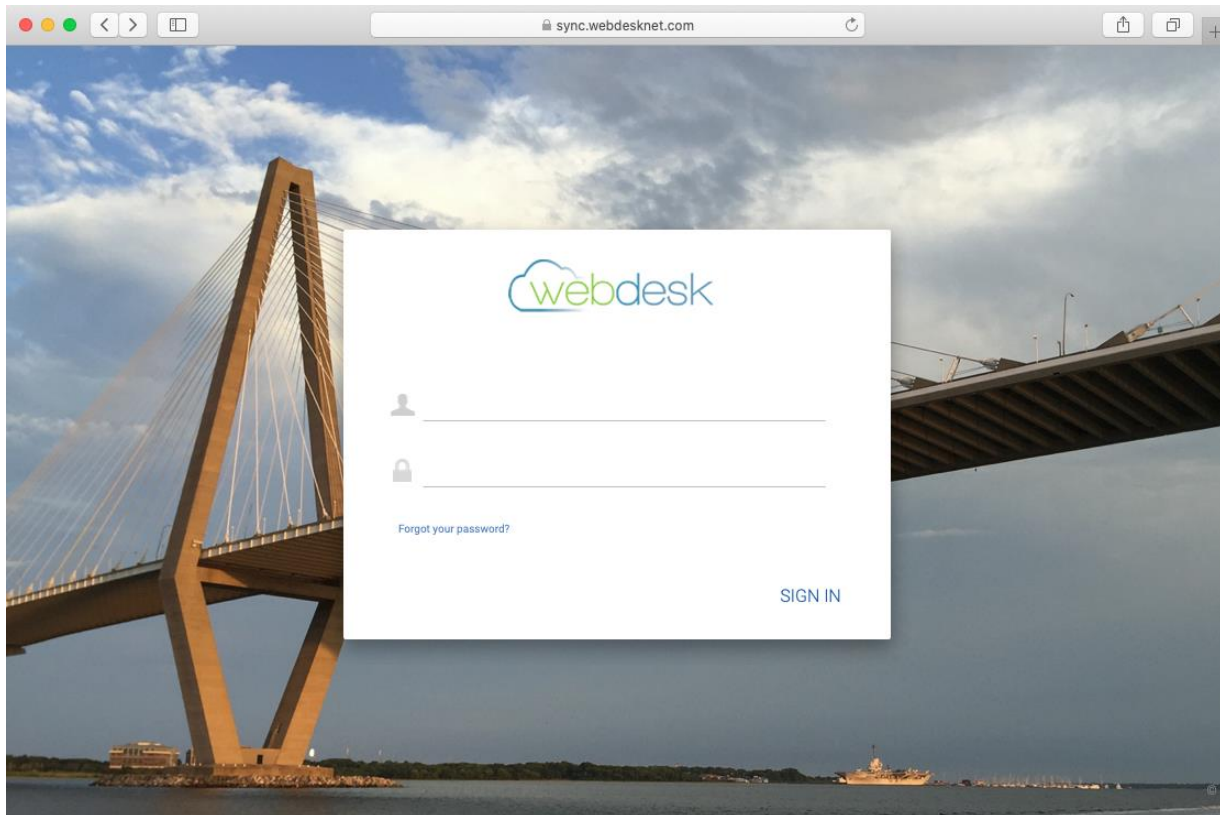
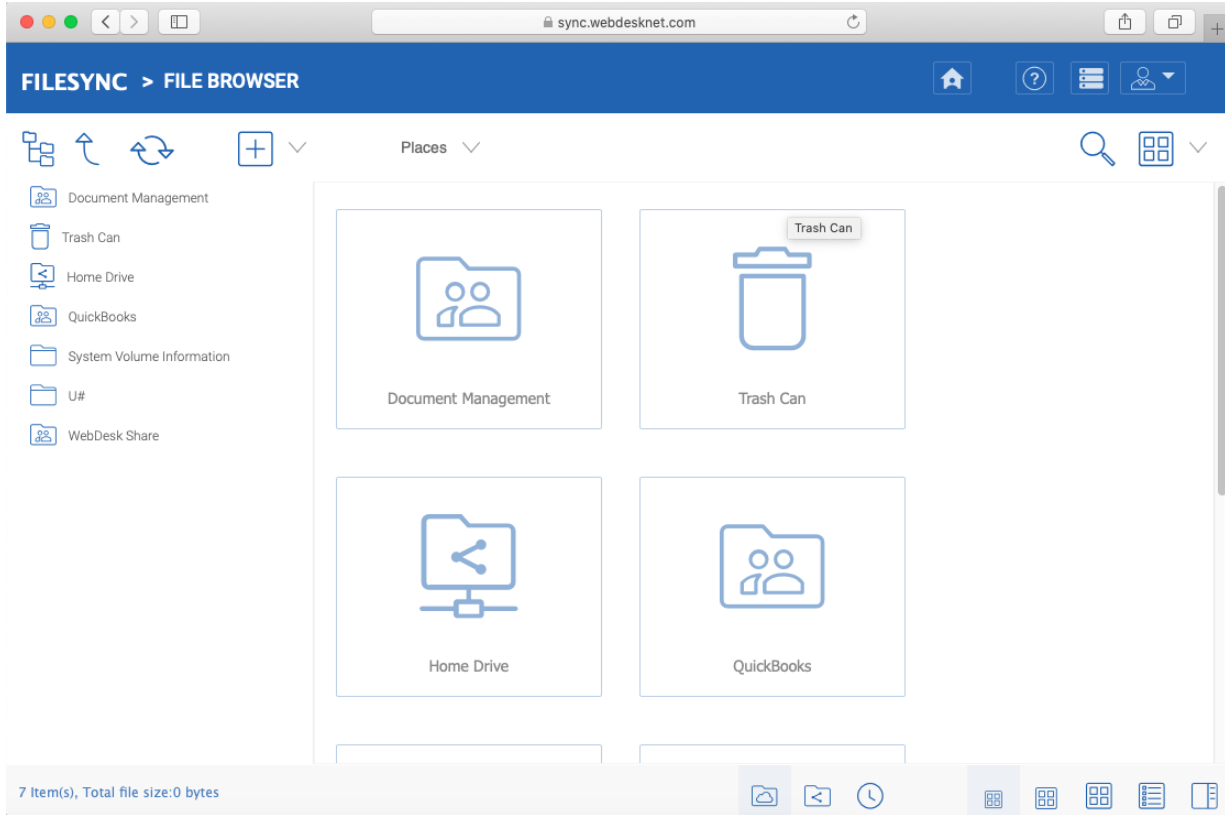

Instructions to Download and Install the FileSync Client on Mac

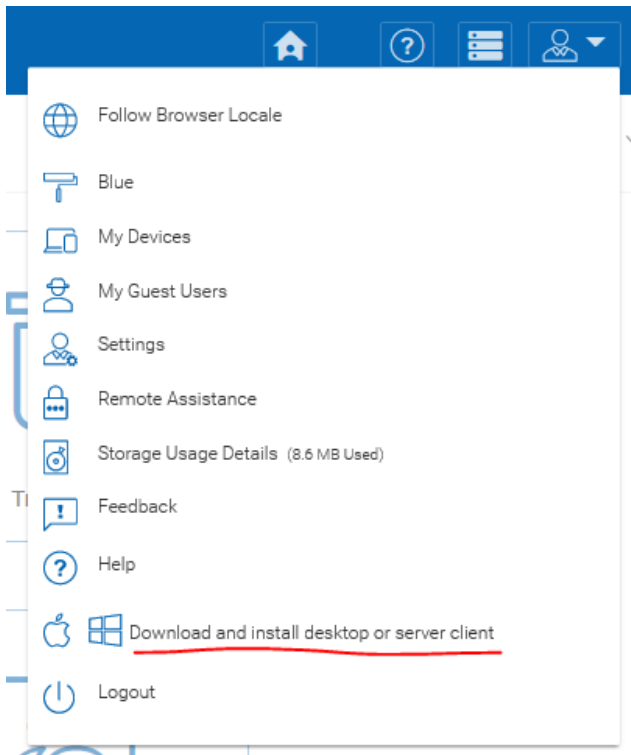
1. Login to the FileSync server by browsing to: <https://sync.webdesknet.com> and enter your WebDesk login credentials.



2. Once logged in, **click the down arrow** next to the user icon to display the menu:



3. This will drop down the menu. Click on **“Download and install desktop or server client”**:



4. The following web page displays your download options. Choose the appropriate Mac download for your version of your OS:

The screenshot shows a web browser window at sync.webdesknet.com. The page title is "FILESYNC > FILE BROWSER > DOWNLOAD NATIVE CLIENTS". Below the navigation bar, there is a text block: "The browser-based file explorer provides most of the basic functionality. For a richer, native experience, you can download native clients." The page is divided into three sections:

- FileSync Desktop Client (Windows)**: "Installs on a (Windows XP, Vista, 7, 8, 8.1, 10) x86/x64 PC, access your storage account as a local drive, sync file across multiple machines." It features icons for Legacy PCs (XP, Vista, 7), Windows 8, and Windows 10. A download link for "Download 32-bit Package 10.11.2908" is available with a "Go" button.
- FileSync Desktop Client (MacOS)**: "Installs on MacOS, access your storage account as a local drive (mounted volume in Finder)." It features icons for Legacy Mac OS X (10.9->10.12) and Mac OS X 10.3+. Download links for "Installer Package (MacOS 10.9/10.10/10.11/10.12)" and "Installer Package (MacOS 10.13/10.14/10.15)" are provided.
- FileSync Mobile**: This section contains four download options: "Download on the App Store" (View in Apple App Store), "GET IT ON Google Play" (Available in "Google Play" Market Store. Android OS 4.4+), "Download from Windows Phone Store" (Available in "Windows Phone" Store. Windows Phone 8+), and "Download from Windows Store" (Available in Windows Store. Windows 8+ (Windows RT, Surface)).

5. When you click on your download link, the following message appears. Click on **ALLOW**:

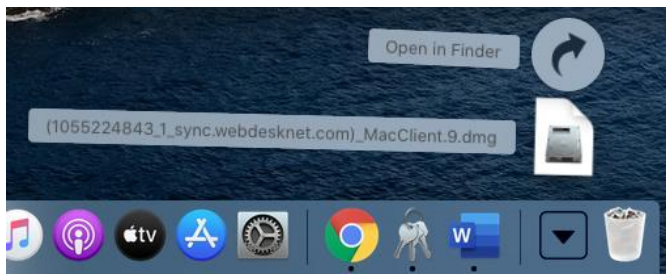
The screenshot shows a system security warning dialog box with the following text:

Do you want to allow downloads on "sync.webdesknet.com"?

You can change which websites can download files in Websites Preferences.

At the bottom right of the dialog, there are two buttons: "Cancel" and "Allow".

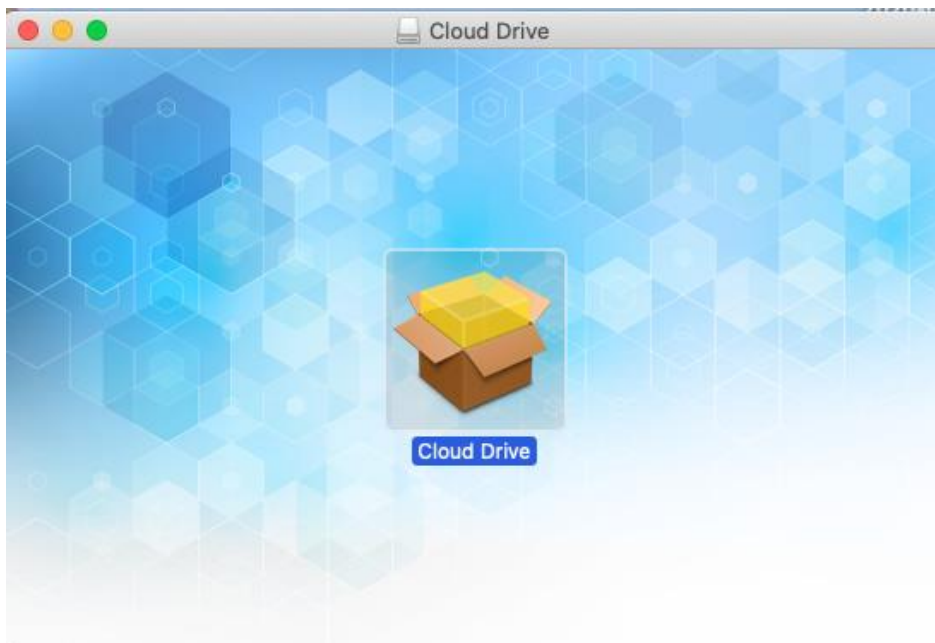
6. The installer will be downloaded to your menu bar. **Click to open.**



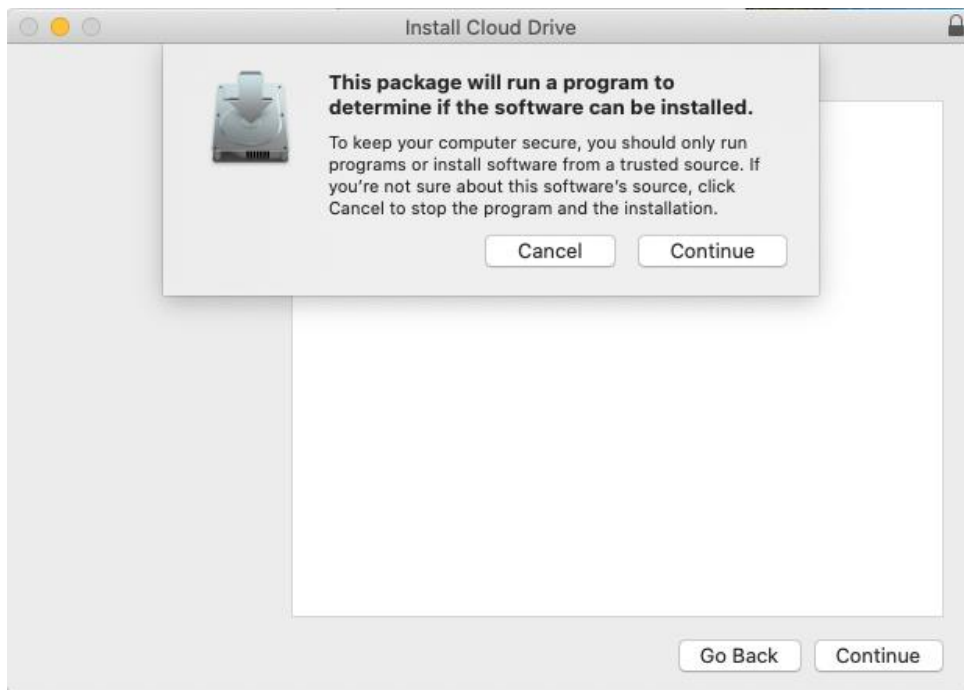
7. This will put the Cloud Drive install program on your desktop. **Double-click it.**



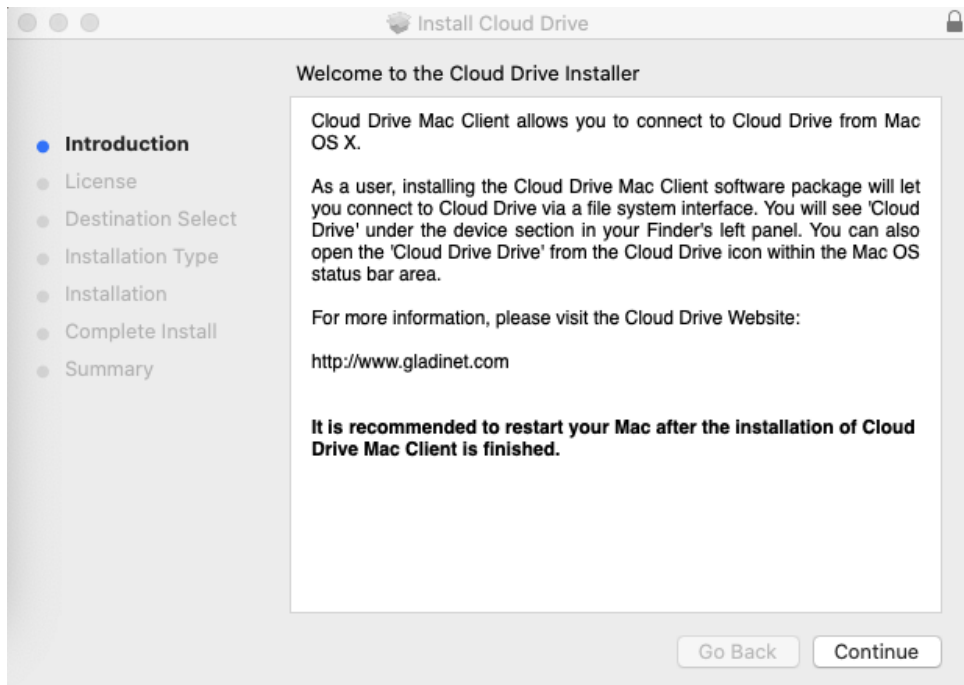
8. When the following is presented, **double-click** to start installation.



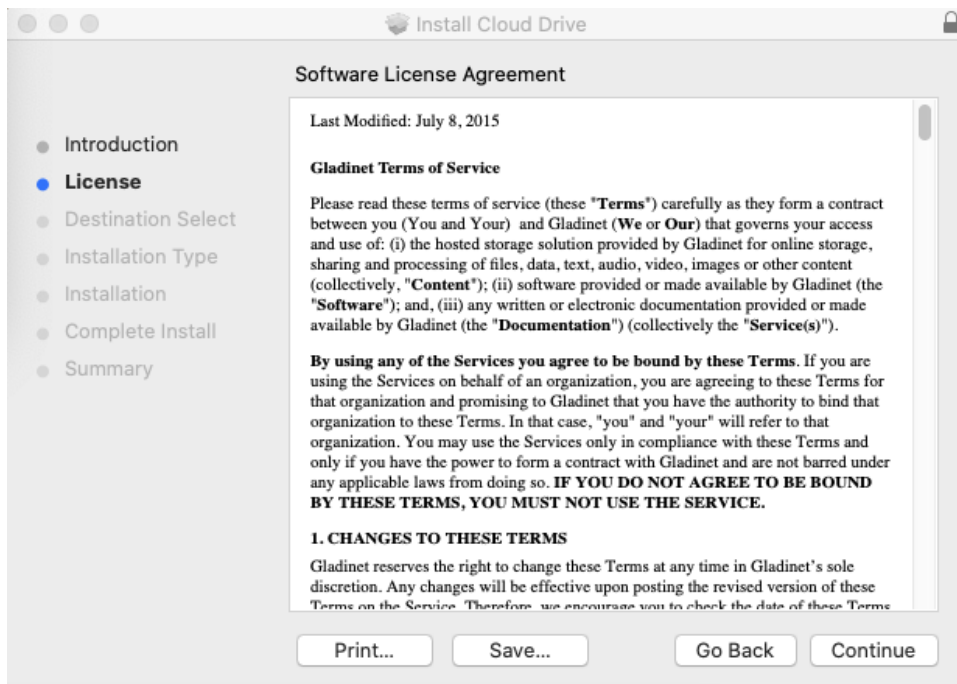
9. Click **CONTINUE** on the following window:



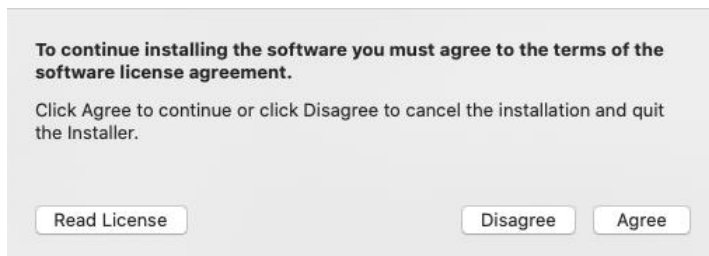
10. Click **CONTINUE** again:



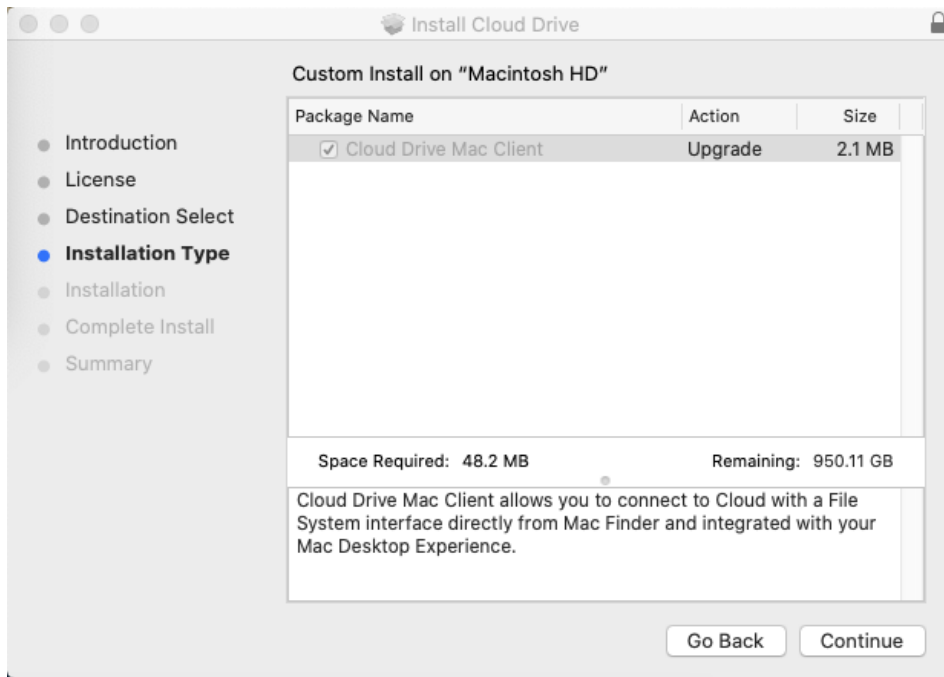
11. At the Software License Agreement window click **CONTINUE** again:



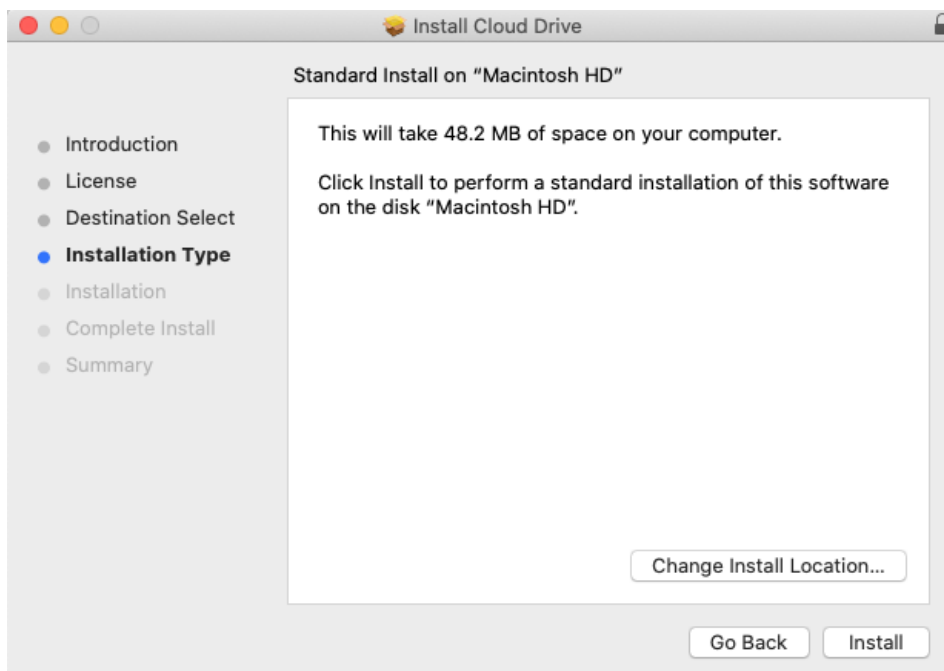
12. The following popup appears, Click **AGREE**:



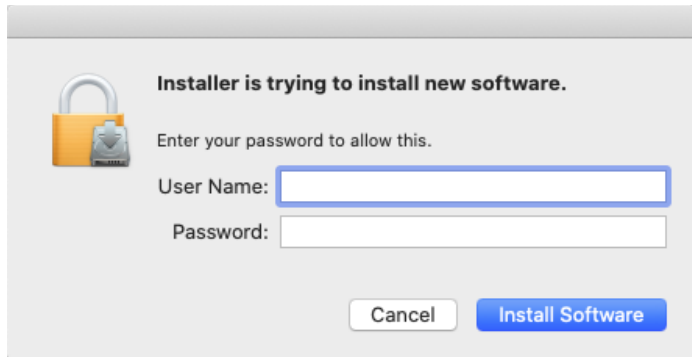
13. On the next window click **CONTINUE**. *NOTE: This window may be slightly different if you have a previous version of the client software:*



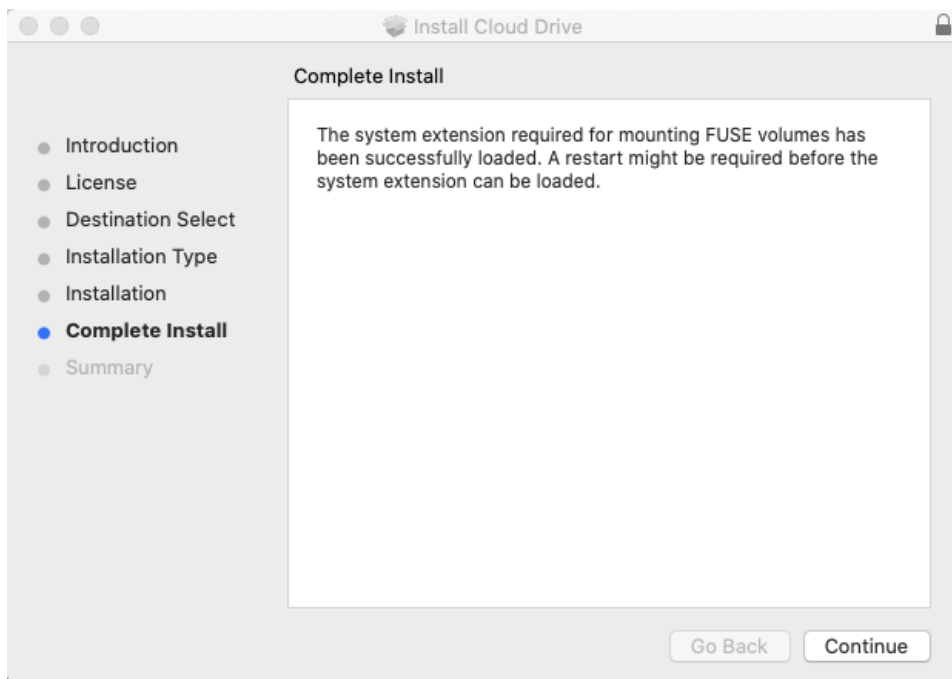
14. The Standard Install window provides the option of changing the install location. We recommend you accept the default location and click on **INSTALL**:



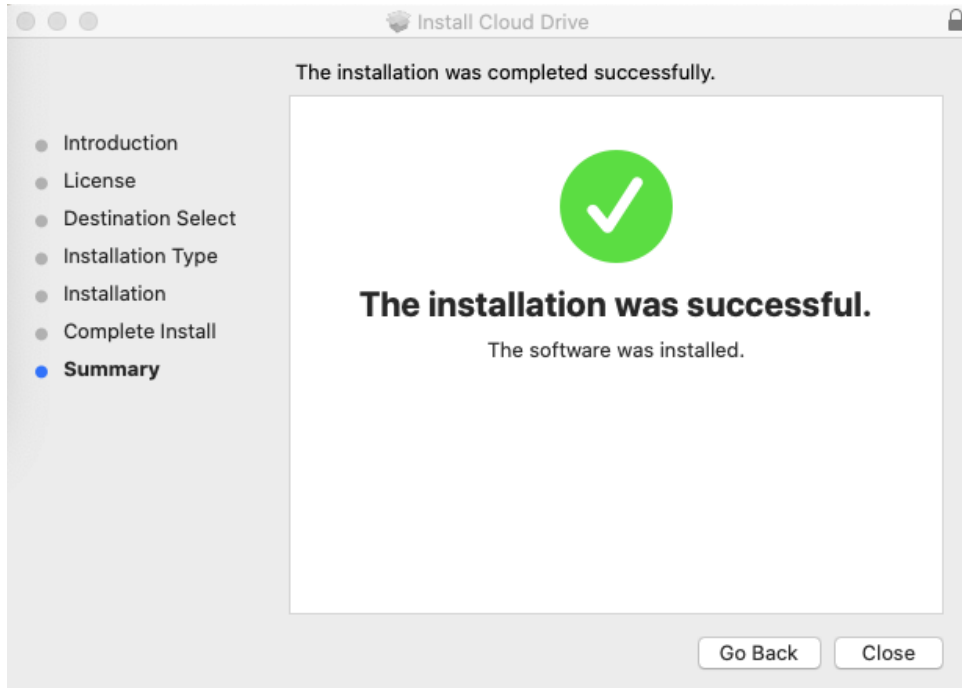
15. When prompted, enter your credentials and click **INSTALL SOFTWARE**:



16. When the client is done installing you will see the following notice, click **CONTINUE**:



17. Click on *CLOSE* to complete install:



18. After the install completes you can keep the install file or move to the trash:

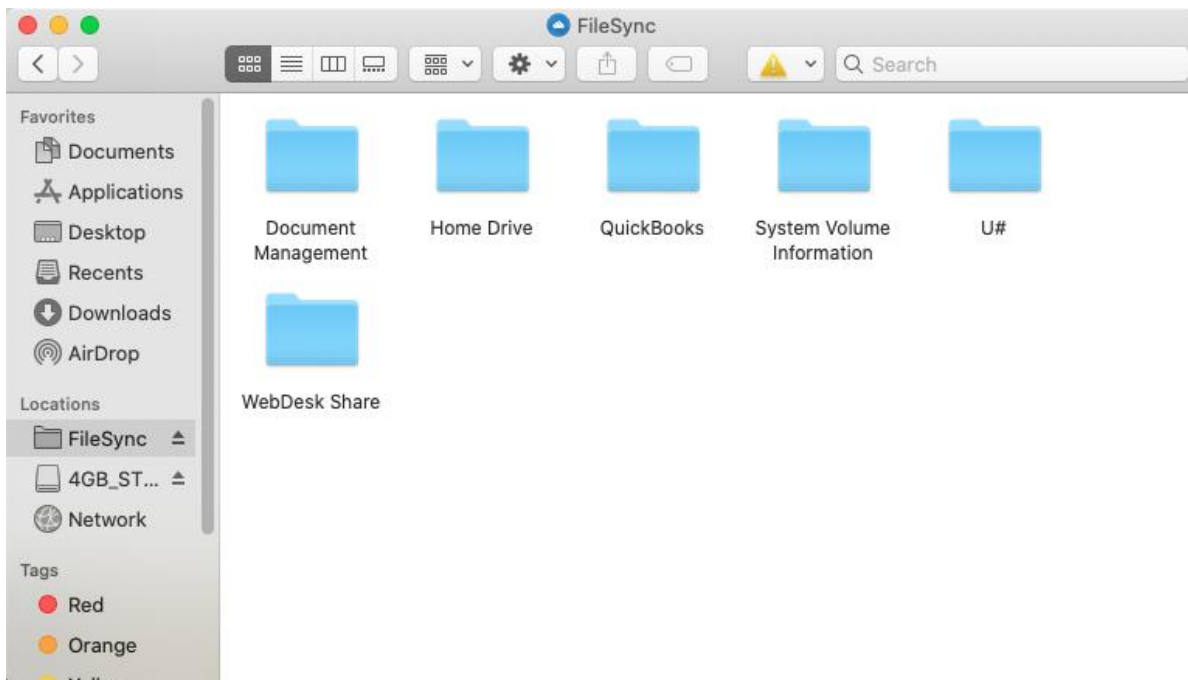


If you select trash, the window in step #8 will close.

19. When you open APPLICATIONS in FINDER you will see the “Cloud Drive Mac Client” for FileSync:



20. Also, in FINDER you will find a new entry under Locations in the left navigation bar. Located there is the **FileSync** drive. This mapped drive will contain all of your cloud shared folders as well as personalized folders, depending on how your user options have been setup. You can use your mapped drive like any other network drive you’ve been accustomed to.



Note that all client updates for FileSync will prompt you once updates are published from the server. This frequency is typically once per month unless import security updates are required.