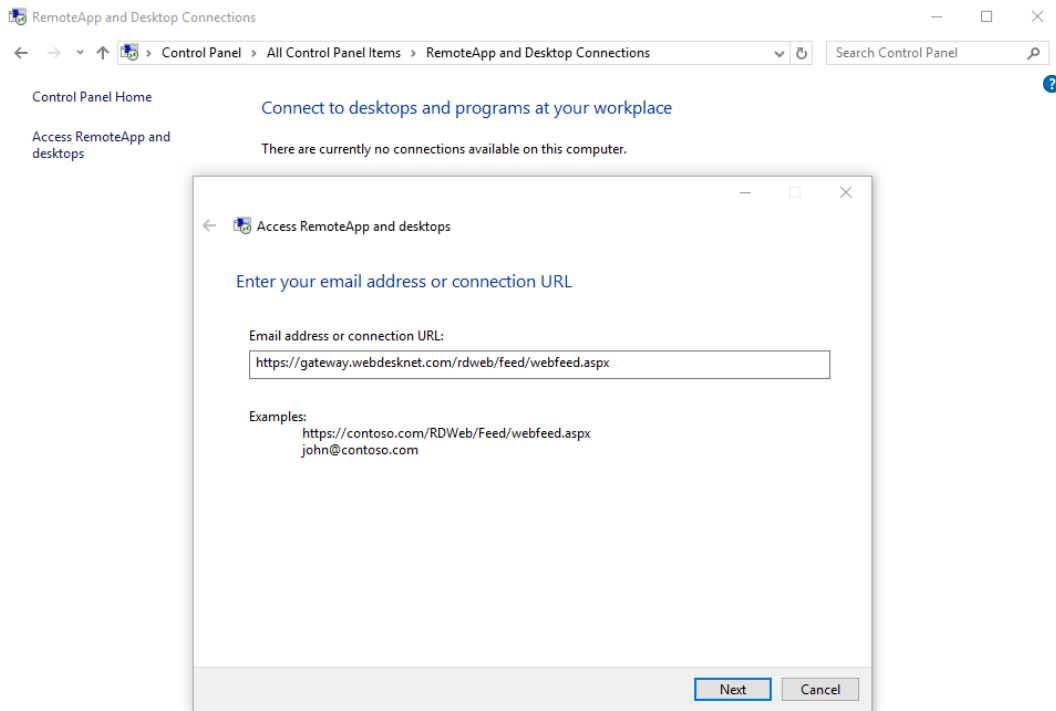
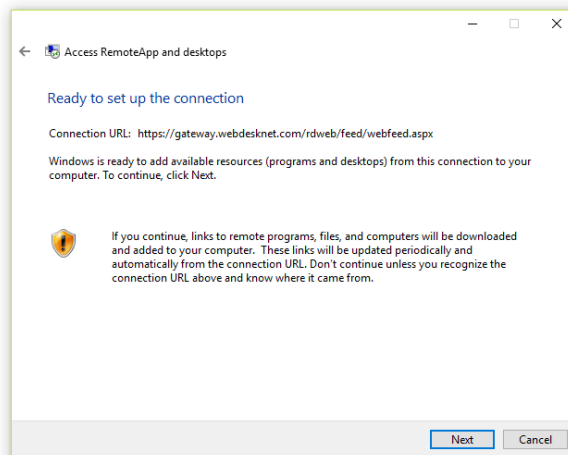

How to connect to the WebDesk Gateway

Windows 10 only

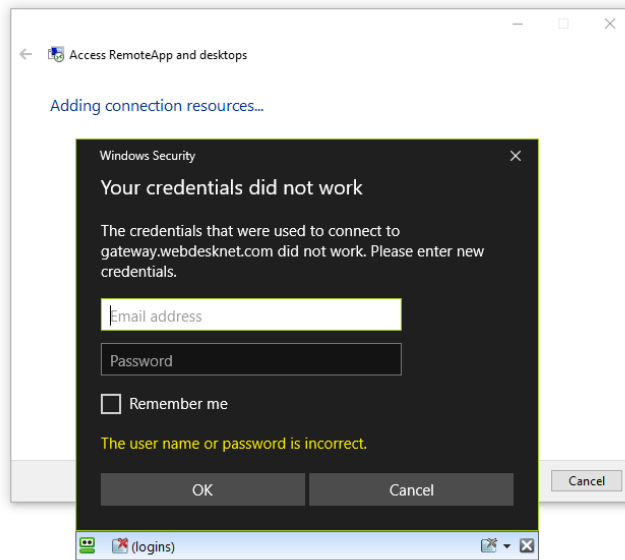
1. Open *Control Panel* and click on *RemoteApp and Desktop Connections*
2. Enter the URL as shown in the illustration below and click *NEXT*:



3. Click *NEXT*

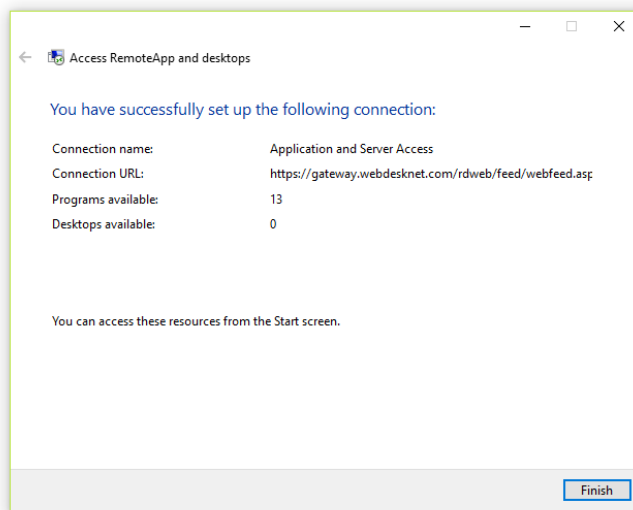


4. You will be greeted with a login Window similar to this. Enter your credentials and check the "Remember me" box.

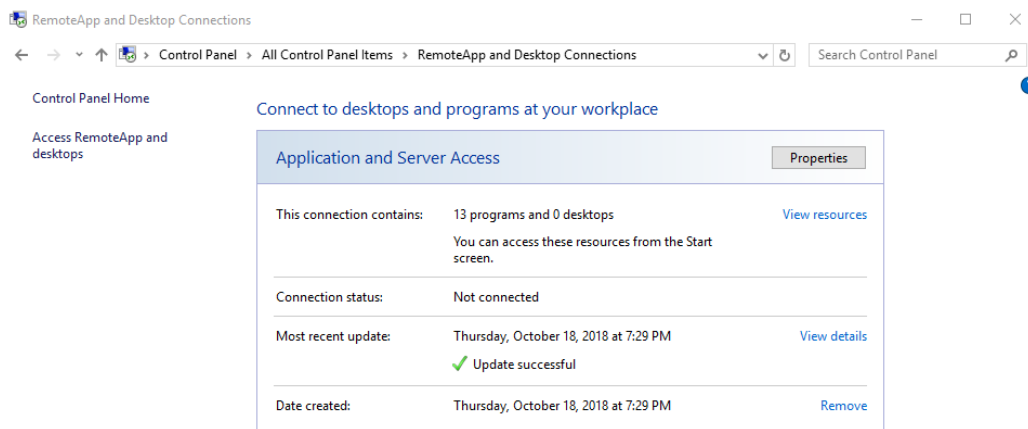


Click OK.

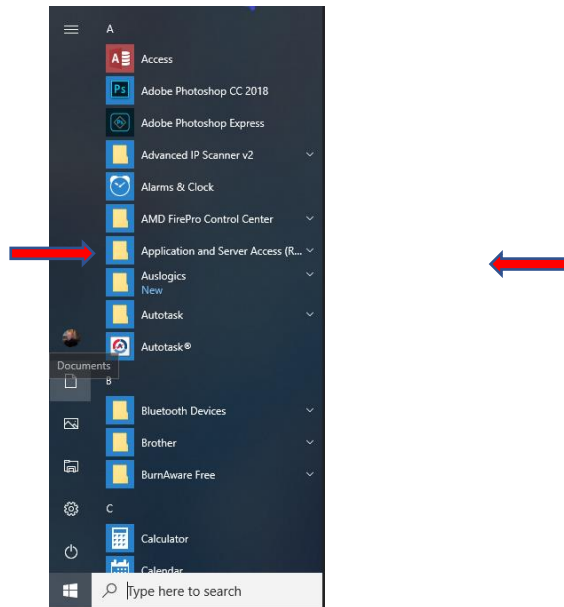
5. Once you are authenticated a confirmation window appears with the connection attributes. Click *Finish*.



6. You are now returned to the *Control Panel* window displaying your connection properties.



7. You can now find your WebDesk Cloud Apps in your *Start Menu* under *Application and Server Access (RADC)*.



8. If you have recently made changes to your WebDesk subscription, you will need to click on *Properties* or *Review Details* from the window in step 6. Then, click on the "Update now" button to refresh your applications:

